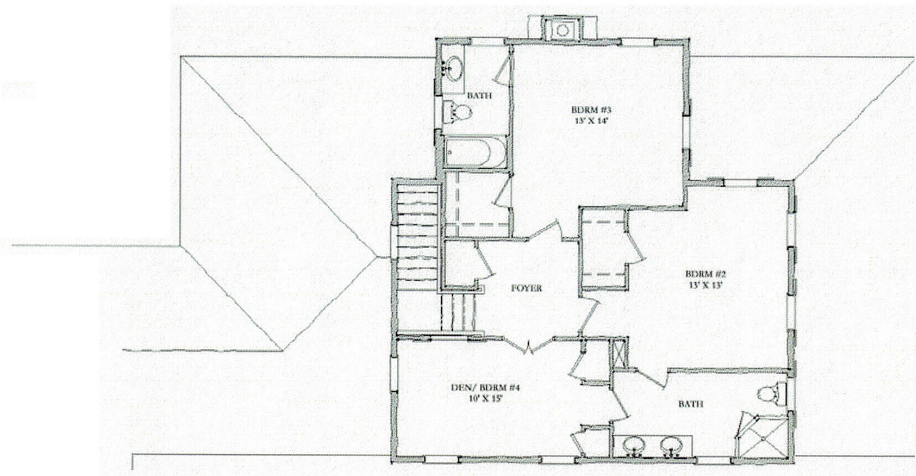
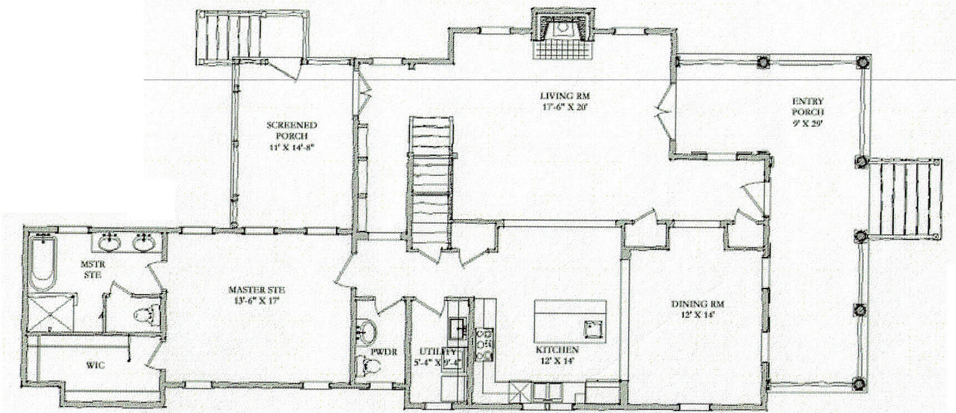


# The Islandton



Bedrooms: 3/4  
Full Baths: 3  
Half Baths: 1  
Sq Ft: 2560  
Width:  
Depth:  
Setback:  
Price: (without homesite)

---



Dated: \_\_\_\_\_

Please note: Builder plans and specifications may vary from information represented here. **Due to the frequency of changes in building material and supply costs prices represented here are subject to change at any time.** Interested parties are advised to independently verify this information through personal inspection or with appropriate professionals. The listing broker, nor their agents or subagents are responsible for the accuracy of the information. HARB approval process required to build. Plans may be lot specific; setbacks may vary. Square footage is approximate. All rights are reserved by the originating designer, architect or architectural firm. Plans may not be reproduced, copied, altered, distributed, stored or transferred in any form without express written consent. Equal Housing Opportunity. Void where prohibited by law.

Please call 1.877.542.2377 for more information or visit [HabershamSC.com](http://HabershamSC.com)