



We Love This!
Lott painted the backs of the bookcases with Sherwin-Williams' Faded Flax Flower (SW 9146).



The Lowcountry is both a geographic and cultural region along South Carolina's coast that has a landscape, style, and cuisine all its own. Most known for its marshy terrain, palmetto trees, and tropical temps, the Lowcountry also has iconic Southern architecture. Farmhouses and cottages here are typically raised (to avoid high tide and hurricanes) with wide front porches and sturdy metal roofs.

We teamed up with the community of Habersham, near Beaufort, South Carolina, to design and build a single-story raised cottage named The Loudon (*Southern Living* House Plan #2054). Designed by Bridgewater and constructed by Allen Patterson Builders, this 2,000-square-foot home has all the hallmarks of Lowcountry style: authentic pine floors, copper gas lanterns, stained shutters, a front porch that stretches the full expanse of the exterior, and a green standing-seam metal roof.

Local designer Kathryn Lott of K.Lo Style & Design filled the interiors with shades of blue to reference the home's coastal setting. Take a tour as we share the design and decorating ideas that make a big impact in this small footprint.

WELCOME

A one-story farmhouse in Habersham, South Carolina, packs a lot of style

HOMIE

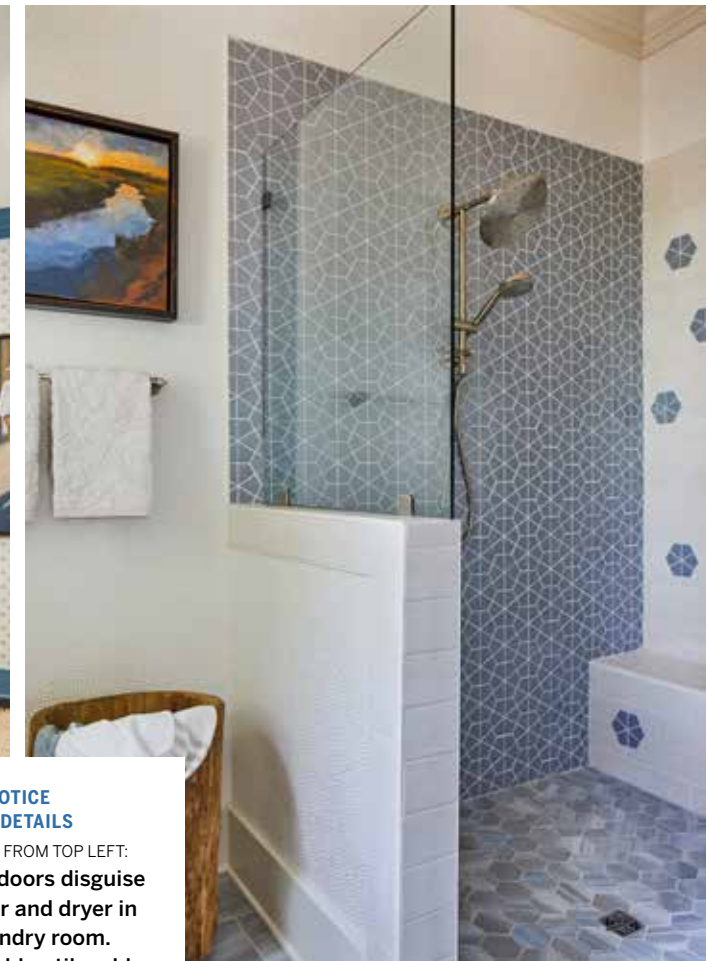
and living in 2,000 square feet



Kitchen

Though compact, the eat-in kitchen is a highly efficient and practical space. White cabinetry by Wellborn Cabinet stretches to the ceiling for ultimate storage. A pair of lanterns (Perennial Lantern in Natural; reginaandrew.com) add traditional style to the wood-topped island. A pantry is housed inside a double-door closet with transom window.

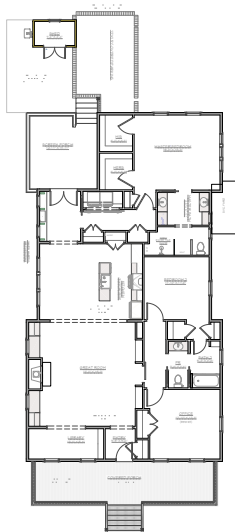
Get the Look
Lott chose a butcher block-inspired waterfall countertop for the island to add warmth to the all-white space.



NOTICE THE DETAILS

CLOCKWISE FROM TOP LEFT: Shuttered doors disguise the washer and dryer in the laundry room. Geometric blue tile adds color to the primary bath. Built-ins in the mudroom are painted Sherwin-Williams' Smokey Azurite (SW 9148). A wood ceiling elevates the main bedroom.





The Loudon PLAN #2054

2,027 SQUARE FEET

This one-story house perfects the art of single-level living. There's a zero-entry shower in the bedroom and covered parking in the rear.

DESIGNED BY:
Bridgewater Consulting LLC

BEDROOMS: 3

BATHS: 2

HAPPY COLOR

A small storage and garden shed (above) sits just outside the back door. The shed door is painted Sherwin-Williams' Ravishing Coral (SW 6612), and the patio is floored with durable Belgard pavers.

A roughly 13-foot square screened porch (right) is situated on the back of the house off the mudroom and laundry room.



SEE MORE HOMES LIKE THIS!

USE THE CODE AT RIGHT OR VISIT SOUTHERNLIVINGHOUSEPLANS.COM FOR MORE DESIGNS WITH CLASSIC, SOUTHERN FARMHOUSE APPEAL.



Get started by simply holding your phone's camera up to the code.



Holly Grove PLAN #1581

1,269 SQUARE FEET

Based on a shotgun style (where you have one straight view from front to back door), this plan has a classic look, space-savvy rooms, and modest square footage—giving you the biggest bang for your buck in construction.

DESIGNED BY:
John Tee

BEDROOMS: 2 **BATHS:** 2



Benning PLAN #1909

3,151 SQUARE FEET

This efficient raised cottage with Colonial-Revival elements has great curb appeal and embodies many of the elements of iconic Southern architecture.

DESIGNED BY:
Our Town Plans

BEDROOMS: 4 **BATHS:** 4 full, 1 half



Pine Island Retreat PLAN #1454

2,123 SQUARE FEET

The wraparound porch on this charming cottage features shutters on two sides for shade, privacy, and a true Southern sleeping porch.

DESIGNED BY:
Benjamin Showalter

BEDROOMS: 4 **BATHS:** 2 full, 1 half

LAUREY W. GLENN

PINE ISLAND RETREAT: MUIR STEWART